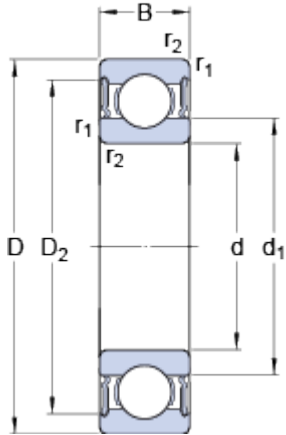


6026-2RS1

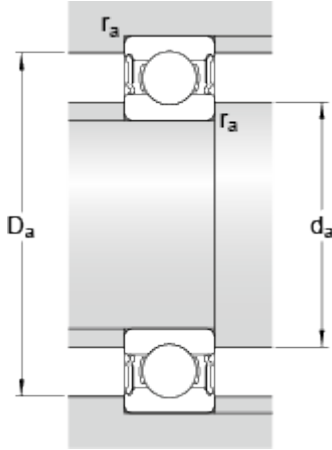
SKF Explorer

Dimensions



d		130	mm
D		200	mm
B		33	mm
d ₁	≈	152.6	mm
D ₂	≈	181.4	mm
r _{1,2}	min.	2	mm

Abutment dimensions



d _a	min.	139	mm
d _a	max.	152.9	mm
D _a	max.	191	mm
r _a	max.	2	mm

Calculation data

Basic dynamic load rating	C	112	kN
Basic static load rating	C	100	kN
Fatigue load limit	P _u	3.35	kN
Limiting speed		2000	r/min
Calculation factor	k _r	0.025	
Calculation factor	f	15.8	

Mass

Mass bearing		3.32	kg
--------------	--	------	----