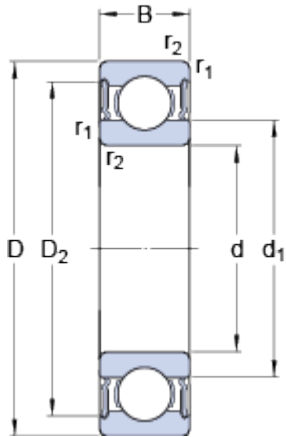


# 6021-2RS1

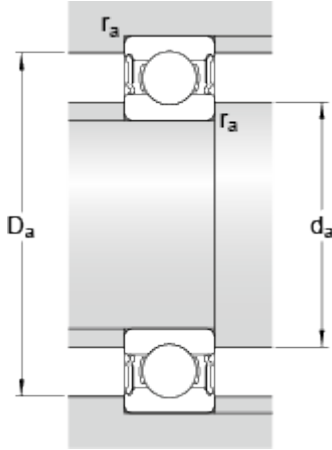
SKF Explorer

## Dimensions



d		105	mm
D		160	mm
B		26	mm
d <sub>1</sub>	≈	122.5	mm
D <sub>2</sub>	≈	146.8	mm
r <sub>1,2</sub>	min.	2	mm

## Abutment dimensions



d <sub>a</sub>	min.	116	mm
d <sub>a</sub>	max.	122	mm
D <sub>a</sub>	max.	149	mm
r <sub>a</sub>	max.	2	mm

## Calculation data

Basic dynamic load rating	C	76.1	kN
Basic static load rating	C	65.5	kN
Fatigue load limit	P <sub>u</sub>	2.4	kN
Limiting speed		2400	r/min
Calculation factor	k <sub>r</sub>	0.025	
Calculation factor	f	15.8	

## Mass

Mass bearing		1.64	kg
--------------	--	------	----