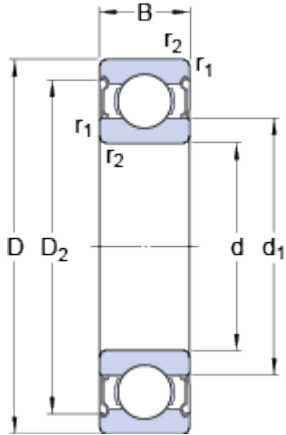


# 6019-2Z

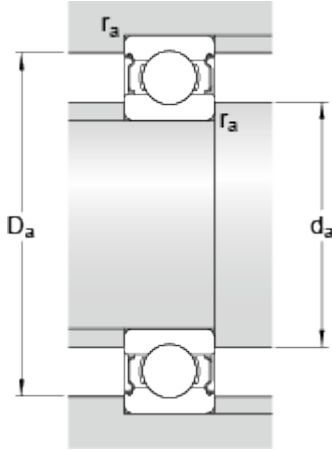
SKF Explorer

## Dimensions



d		95	mm
D		145	mm
B		24	mm
d <sub>1</sub>	≈	111.4	mm
D <sub>2</sub>	≈	133.3	mm
r <sub>1,2</sub>	min.	1.5	mm

## Abutment dimensions



d <sub>a</sub>	min.	102	mm
d <sub>a</sub>	max.	111	mm
D <sub>a</sub>	max.	138	mm
r <sub>a</sub>	max.	1.5	mm

## Calculation data

Basic dynamic load rating	C	63.7	kN
Basic static load rating	C	54	kN
Fatigue load limit	P <sub>u</sub>	2.08	kN
Reference speed		9500	r/min
Limiting speed		4800	r/min
Calculation factor	k <sub>r</sub>	0.025	
Calculation factor	f	15.8	

## Mass

Mass bearing		1.27	kg
--------------	--	------	----