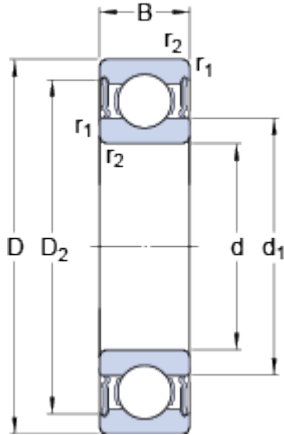


6019-2RS1

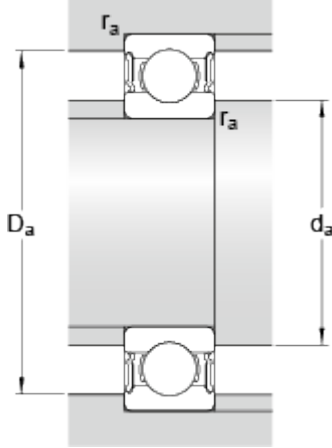
SKF Explorer

Dimensions



d		95	mm
D		145	mm
B		24	mm
d ₁	≈	111.4	mm
D ₂	≈	133.3	mm
r _{1,2}	min.	1.5	mm

Abutment dimensions



d _a	min.	102	mm
d _a	max.	111	mm
D _a	max.	138	mm
r _a	max.	1.5	mm

Calculation data

Basic dynamic load rating	C	63.7	kN
Basic static load rating	C	54	kN
Fatigue load limit	P _u	2.08	kN
Limiting speed		2800	r/min
Calculation factor	k _r	0.025	
Calculation factor	f	15.8	

Mass

Mass bearing		1.25	kg
--------------	--	------	----