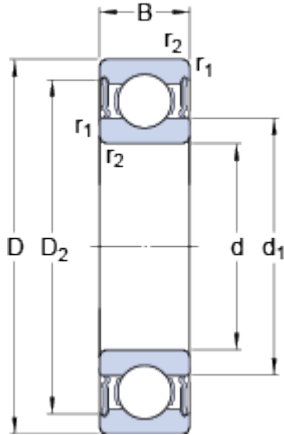


6016-2RS1

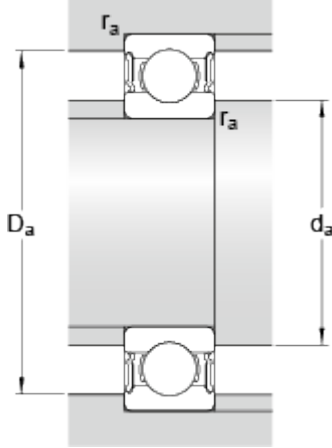
SKF Explorer

Dimensions



d		80	mm
D		125	mm
B		22	mm
d ₁	≈	94.4	mm
D ₂	≈	114.1	mm
r _{1,2}	min.	1.1	mm

Abutment dimensions



d _a	min.	86	mm
d _a	max.	94.3	mm
D _a	max.	119	mm
r _a	max.	1	mm

Calculation data

Basic dynamic load rating	C	49.4	kN
Basic static load rating	C	40	kN
Fatigue load limit	P _u	1.66	kN
Limiting speed		3200	r/min
Calculation factor	k _r	0.025	
Calculation factor	f	15.6	

Mass

Mass bearing		0.88	kg
--------------	--	------	----