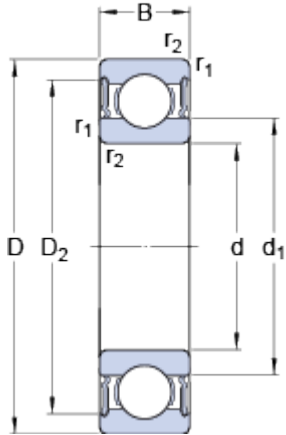


# 6011-2RS1

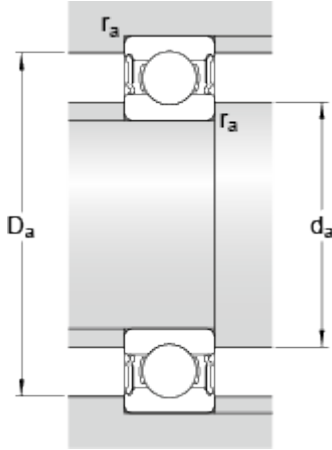
SKF Explorer

## Dimensions



d		55	mm
D		90	mm
B		18	mm
d <sub>1</sub>	≈	66.3	mm
D <sub>2</sub>	≈	81.5	mm
r <sub>1,2</sub>	min.	1.1	mm

## Abutment dimensions



d <sub>a</sub>	min.	61	mm
d <sub>a</sub>	max.	66.2	mm
D <sub>a</sub>	max.	84	mm
r <sub>a</sub>	max.	1	mm

## Calculation data

Basic dynamic load rating	C	29.6	kN
Basic static load rating	C	21.2	kN
Fatigue load limit	P <sub>u</sub>	0.9	kN
Limiting speed		4500	r/min
Calculation factor	k <sub>r</sub>	0.025	
Calculation factor	f	15.4	

## Mass

Mass bearing		0.4	kg
--------------	--	-----	----