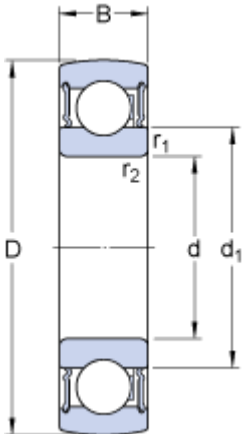


1726309-2RS1

Dimensions



d		45	mm
D		100	mm
B		25	mm
d ₁	≈	62.18	mm
r _{1,2}	min.	1.5	mm

Calculation data

Basic dynamic load rating	C	52.7	kN
Basic static load rating	C	31.5	kN
Fatigue load limit	P _u	1.34	kN
Limiting speed ¹⁾		4500	r/min
Calculation factor	f	13	

Mass

Mass complete bearing		0.8	kg
-----------------------	--	-----	----