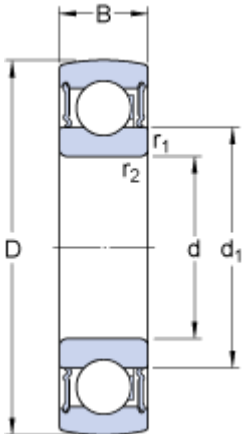


# 1726211-2RS1

## Dimensions



d		55	mm
D		100	mm
B		21	mm
d <sub>1</sub>	≈	69.06	mm
r <sub>1,2</sub>	min.	1.5	mm

## Calculation data

Basic dynamic load rating	C	43.6	kN
Basic static load rating	C	29	kN
Fatigue load limit	P <sub>u</sub>	1.25	kN
Limiting speed <sup>1)</sup>		4300	r/min
Calculation factor	f	14	

## Mass

Mass complete bearing		0.6	kg
-----------------------	--	-----	----