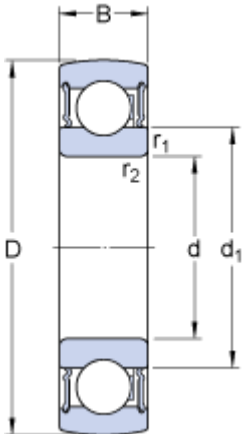


# 1726210-2RS1

## Dimensions



d		50	mm
D		90	mm
B		20	mm
d <sub>1</sub>	≈	62.51	mm
r <sub>1,2</sub>	min.	1.1	mm

## Calculation data

Basic dynamic load rating	C	35.1	kN
Basic static load rating	C	23.2	kN
Fatigue load limit	P <sub>u</sub>	0.98	kN
Limiting speed <sup>1)</sup>		4800	r/min
Calculation factor	f	14	

## Mass

Mass complete bearing		0.44	kg
-----------------------	--	------	----