

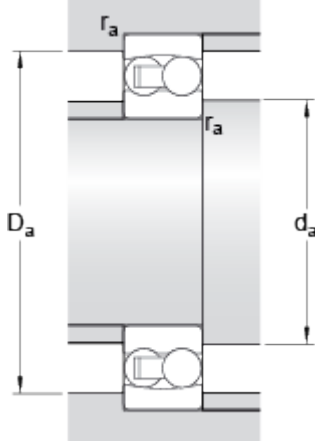
129 TN9

Dimensions



d	9	mm
D	26	mm
B	8	mm
d ₁	≈ 14.8	mm
D ₁	≈ 20.4	mm
r _{1,2}	min. 0.3	mm

Abutment dimensions



d _a	min.	11.4	mm
D _a	max.	23.6	mm
r _a	max.	0.3	mm

Calculation data

Basic dynamic load rating	C	3.9	kN
Basic static load rating	C	0.82	kN
Fatigue load limit	P _u	0.043	kN
Reference speed		60000	r/min
Limiting speed		38000	r/min
Permissible angular misalignment	α	3	°
Calculation factor	k _r	0.04	
Calculation factor	e	0.33	
Calculation factor	Y	2	
Calculation factor	Y ₁	1.9	
Calculation factor	Y ₂	3	

Mass

Mass bearing	0.022	kg
--------------	-------	----

