

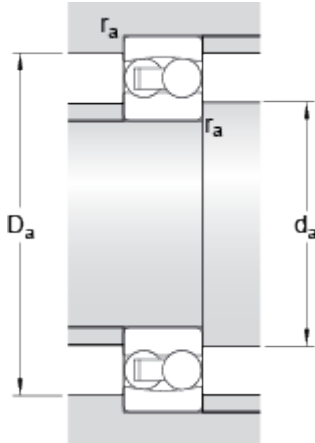
126 TN9

Dimensions



d	6	mm
D	19	mm
B	6	mm
d ₁	≈ 10.309	mm
D ₁	≈ 15.4	mm
r _{1,2}	min. 0.3	mm

Abutment dimensions



d _a	min. 8.4	mm
D _a	max. 16.6	mm
r _a	max. 0.3	mm

Calculation data

Basic dynamic load rating	C	2.51	kN
Basic static load rating	C	0.48	kN
Fatigue load limit	P _u	0.025	kN
Reference speed		70000	r/min
Limiting speed		45000	r/min
Permissible angular misalignment	α	3	°
Calculation factor	k _r	0.04	
Calculation factor	e	0.33	
Calculation factor	Y	2	
Calculation factor	Y ₁	1.9	
Calculation factor	Y ₂	3	

Mass

Mass bearing	0.009	kg
--------------	-------	----

